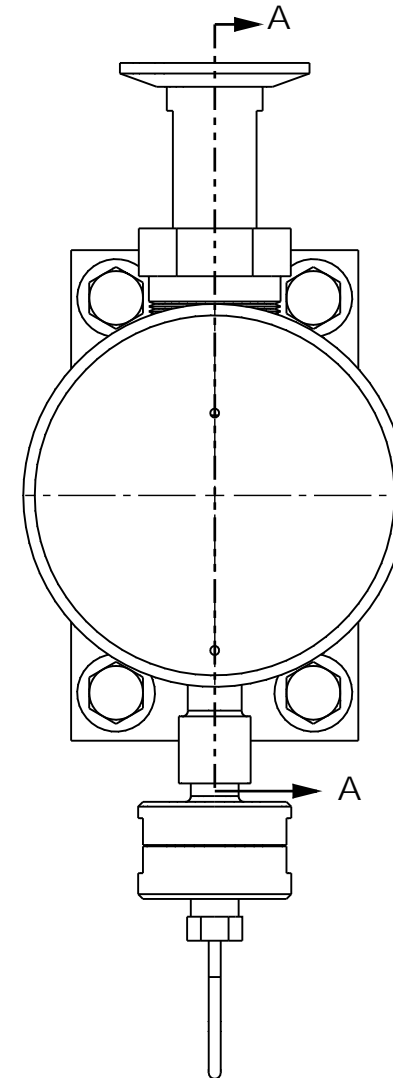
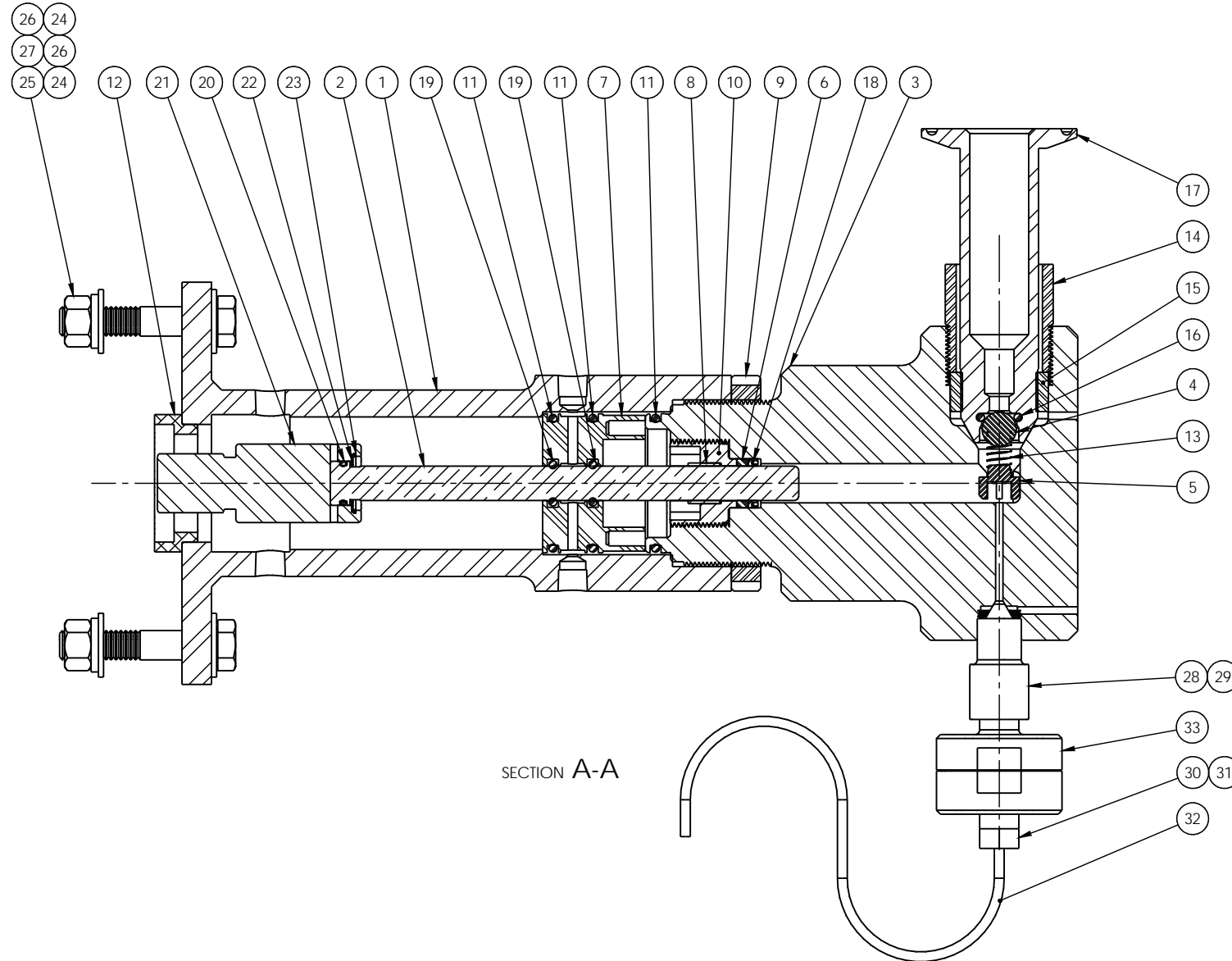


ITEM NO.	Default/QTY	PART NUMBER	DESCRIPTION	MATERIAL	Number
1	1	12.2736	ISOLATOR M110EH XP 2002	304 SS	C-13332
2	1	12.2013	PLUNGER ZIRCONIA .437 DIA	ZIRCONIA	B-13342
3	1	12.3076	PUMP BODY, M-110EH 2002	17-4 PH SS	12.3076
4	1	12.6113	BALL .43 316 SS	316 SS	ND
5	1	12.6330	RETAINER, M-110EH SPRING	316 SS	B-11842
6	1	18.4010	BU-RING FOR 110TYF PLUNGR SEAL	PEEK	11298
7	1	18.4204	BEARING ISOLTR M110EH2002	PEEK	C-13340
8	1	18.4221	PLUNGER BEARING M-110EH	PEEK	A-12055
9	1	22.3003	NUT LOCK PUMPBDY110EH2002	316 SS	A-13341
10	1	18.4205	RETAINR BEARING 110EH2002	316 SS	B-13339
11	3	18.V129	O-RING #129 VITON 9005-75	VITON	ND
12	1	40.10110	RING CYLINDER LM20	ALUMINUM	40.10110
13	1	12.6327	SPRING .31 X .56 X .015 316SS INLET CHECK VALVE	316SS	A-12079
14	1	60.2000	GLAND 1 MP 316 SS	316 SS	ND
15	1	60.2010	COLLAR 1 MP 316 SS	316 SS	ND
16	1	24.4800	O-RING #110 TEFLON	TEFLON	ND
17	1	12.6315	FITTING INLET M110EHMKII	17-4 PH	B-12007
18	1	18.4000	SEAL PLUNGER UHMWPE	UHMWPE	ND
19	2	18.V111	O-RING #111 VITON	VITON	ND
20	1	18.V013	O-RING #013 VITON	VITON	ND
21	1	40.10046	EXTENSION HYD CYL LM20	300 SS	40.10046
22	1	99.0491	FLAT WASHER .617 OD X .496 ID X .020 THK	300 SS	ND
23	1	22.1802	SNAP RING INTERNAL .68 SHAFT	ZINC PLATED STEEL	ND
24	4	99.0167	HHCS .38-16 X 2.00 LG	18-8 SS	ND
25	4	99.0083	NUT HEX .38-16	18-8 SS	ND
26	8	99.0099	WASHER FLAT .38	18-8 SS	ND
27	4	99.0110	WASHER LOCK .38	18-8 SS	ND
28	1	25.6019	ADPT .25 HPM X .12 HPF	NITRONIC 60	B-12933
29	1	33.0005	MALE CONE .316 SS	316 SS	ND
30	1	15.1900	GLAND .13 HP	316 SS	ND
31	1	15.1901	COLLAR .13 HP	316 SS	ND
32	1	40.10193	TUBE BENT .12 HP LM20	316 SS	40.10193
33	1	REF	CHAMBER LV1	SS	ND

REVISIONS						
REV.	ZONE	ECN NO.	DESCRIPTION	DRAWN BY	APPROVED BY	DATE
A	-	-	RELEASED FOR MANUFACTURE	JR	-	2/25/15
B	-	849	REVISED PER ECO	JR	-	6/30/15



MICROFLUIDICS
 90 GLACIER DRIVE
 SUITE 1000
 WESTWOOD, MA 02090 USA
 SCALE: 1:1
 DATE: 2/25/15
 TOLERANCES: UNLESS OTHERWISE NOTED
 XX = ±.01
 XXX = ±.005
 DRAWN BY: JR
 F. N. 90.10029
LIQUID END ASSY LM20
 MATERIAL: SEE BILL OF MATERIALS
 SIZE: D
 DRAWING NUMBER: 90.10029
 REV: B